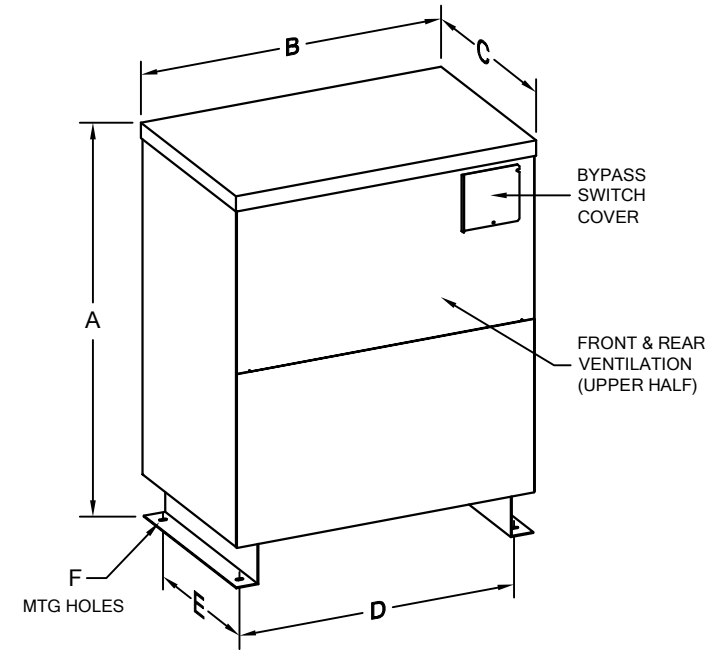
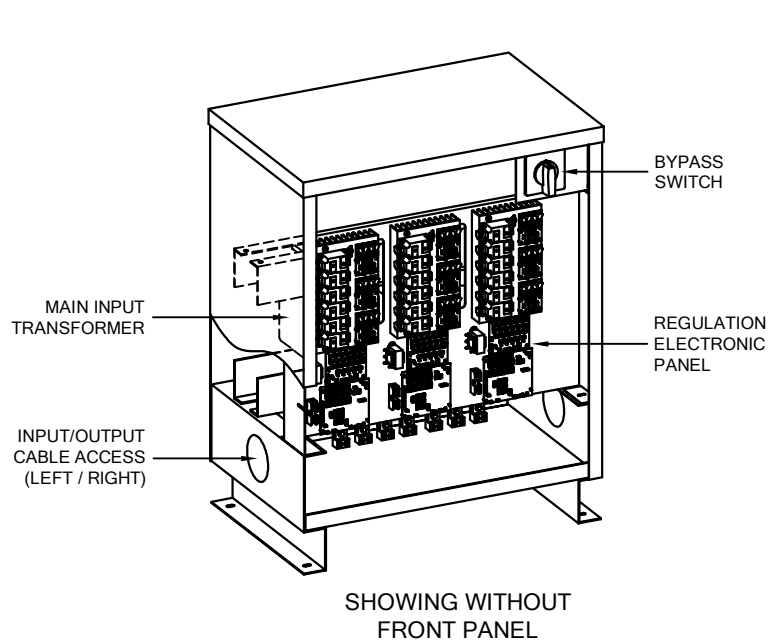


OPTIONS:


- HARMONIC CANCELLATION
- TVSS.
- K-FACTOR RATINGS UP TO K-50.



INPUT VOLTAGE: 208V							
RATING	CAB REF	DIM A	DIM B	DIM C	DIM D	DIM E	DIA F
15 KVA	B	38	26.5	17	23.5	12	1/2
30 KVA	B	38	26.5	17	23.5	12	1/2
50 KVA	C	40.5	31.5	21.5	28.5	16	1/2
75 KVA	D	51.5	40.5	26.5	37	21	9/16
100 KVA	E	66	50.5	32	47.5	24	9/16
125 KVA	E	66	50.5	32	47.5	24	9/16
150 KVA	E	66	50.5	32	47.5	24	9/16
175 KVA	E	66	50.5	32	47.5	24	9/16
200 KVA	E	66	50.5	32	47.5	24	9/16
225 KVA	E	66	50.5	32	47.5	24	9/16
250 KVA	E	66	50.5	32	47.5	24	9/16
300 KVA	E	66	50.5	32	47.5	24	9/16

INPUT VOLTAGE: 480V							
RATING	CAB REF	DIM A	DIM B	DIM C	DIM D	DIM E	DIA F
15 KVA	B	38	26.5	17	23.5	12	1/2
30 KVA	B	38	26.5	17	23.5	12	1/2
50 KVA	C	40.5	31.5	21.5	28.5	16	1/2
75 KVA	C	40.5	31.5	21.5	28.5	16	1/2
100 KVA	C	40.5	31.5	21.5	28.5	16	1/2
125 KVA	D	51.5	40.5	26.5	37	21	9/16
150 KVA	D	51.5	40.5	26.5	37	21	9/16
175 KVA	E	66	50.5	32	47.5	24	9/16
200 KVA	E	66	50.5	32	47.5	24	9/16
225 KVA	E	66	50.5	32	47.5	24	9/16
250 KVA	E	66	50.5	32	47.5	24	9/16
300 KVA	E	66	50.5	32	47.5	24	9/16

15 - 300 KVA

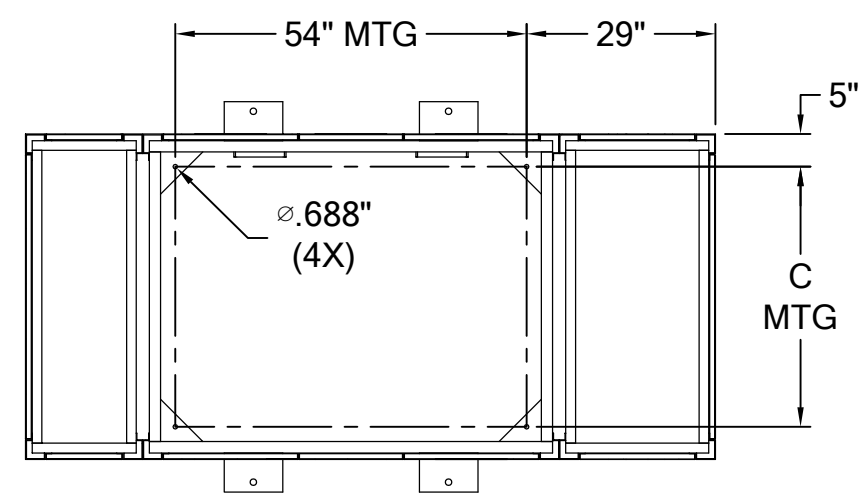
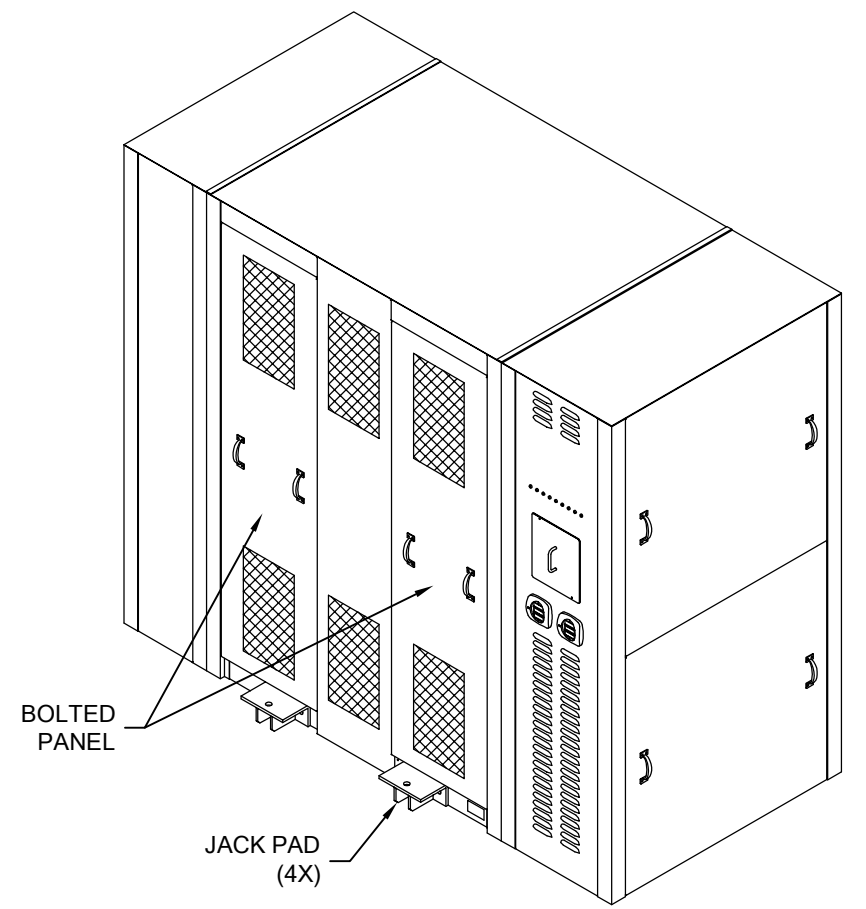
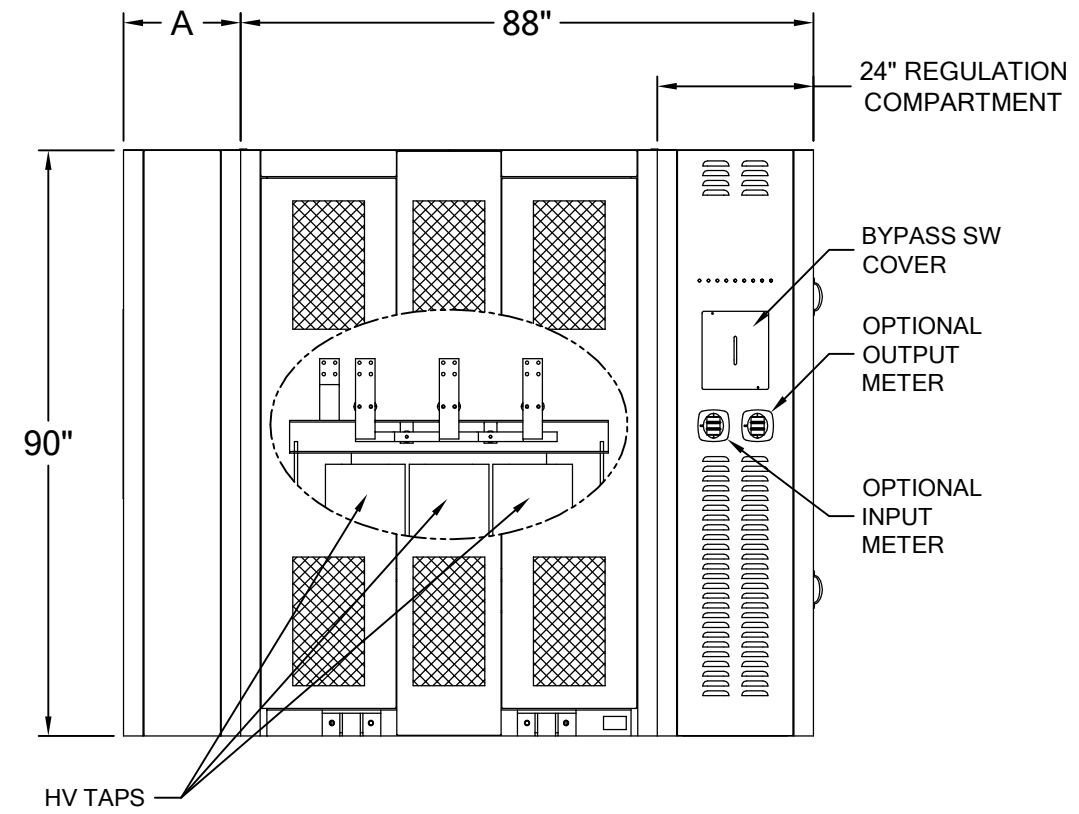
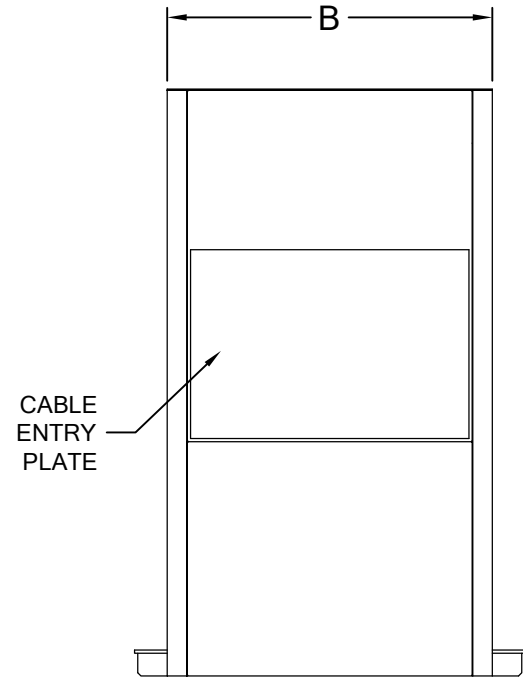
			INDUSTRIAL AUTOMATIC VOLTAGE REGULATOR	
			CHK'D: H.N. 12/15/21	160-TD-A Rev A
APPVD: H.N. 12/15/21	SUBJECT TO CHANGE WITHOUT NOTICE			

INPUT VOLTAGE	RATING	DIM A	DIM B	DIM C
480V	400 KVA	N/A	50"	40"
	500 KVA	N/A	50"	40"
	750 KVA	18"	60"	50"
	1000 KVA	18"	60"	50"

NOTES:

- 1) ALL DIMENSIONS SHOWN ARE APPROXIMATE.
- 2) ENCLOSURE: NEMA1 VENTILATED.
- 3) AVAILABLE OPTIONS:
 - HARMONIC CANCELLATION.
 - TVSS.
 - K-FACTOR RATINGS UP TO K-50.
 - INPUT METER.
 - OUTPUT METER.
 - AUTO BY-PASS.
 - BUS TO END INPUT/OUTPUT CONFIGURATION.
 - INPUT/OUTPUT BREAKER(S) AND I/O TERMINALS (WIDTH WILL INCREASE BY 24")

DIGITAL METER

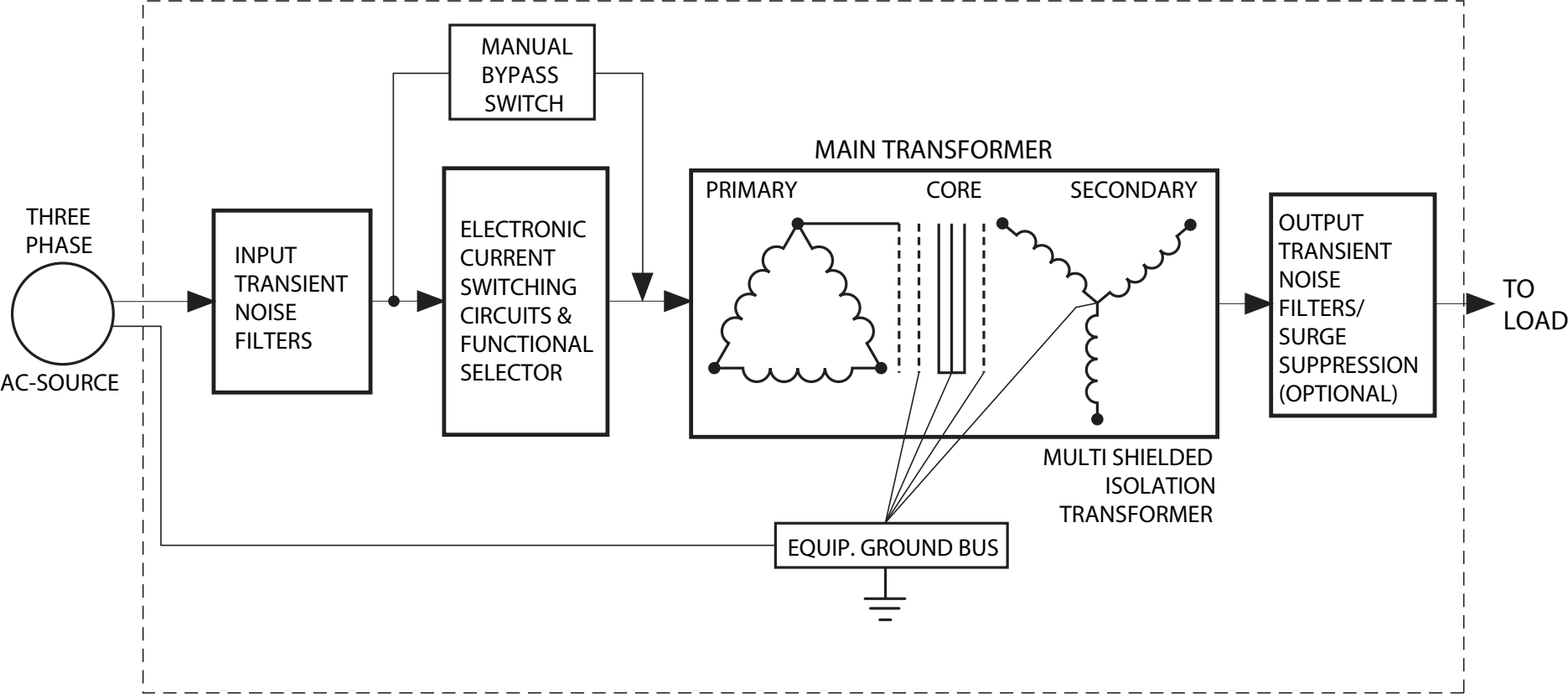



MEASURED PARAMETERS	ACCURACY % OF READING	DISPLAY RANGE
VOLTAGE L-N	0.1 %	0-9999 SCALEABLE V OR KV
VOLTAGE L-L	0.1 %	0-9999 V OR KV SCALEABLE
CURRENT	0.1 %	0-9999 AMPS OR KAMPS
+/- WATTS	0.2 %	0-9999 WATTS, KWATTS, MWATTS
+/- WH	0.2 %	5 TO 8 DIGITS PROGRAMMABLE
+/- VARS	0.2 %	0-9999 VARS, KVARs, MVARs
+/- VARH	0.2 %	5 TO 8 DIGITS PROGRAMMABLE
VA	0.2 %	0-9999 VA, KVA, MVA
VAH	0.2 %	5 TO 8 DIGITS PROGRAMMABLE
PF	0.2 %	+/- 0.5 TO 1.0
FREQUENCY	0.01 HZ	45 TO 65 HZ
% THD	5.0 %	0 TO 100%
% LOAD BAR	1-120 %	10 DIGIT RESOLUTION SCALABLE

400 - 1000 KVA

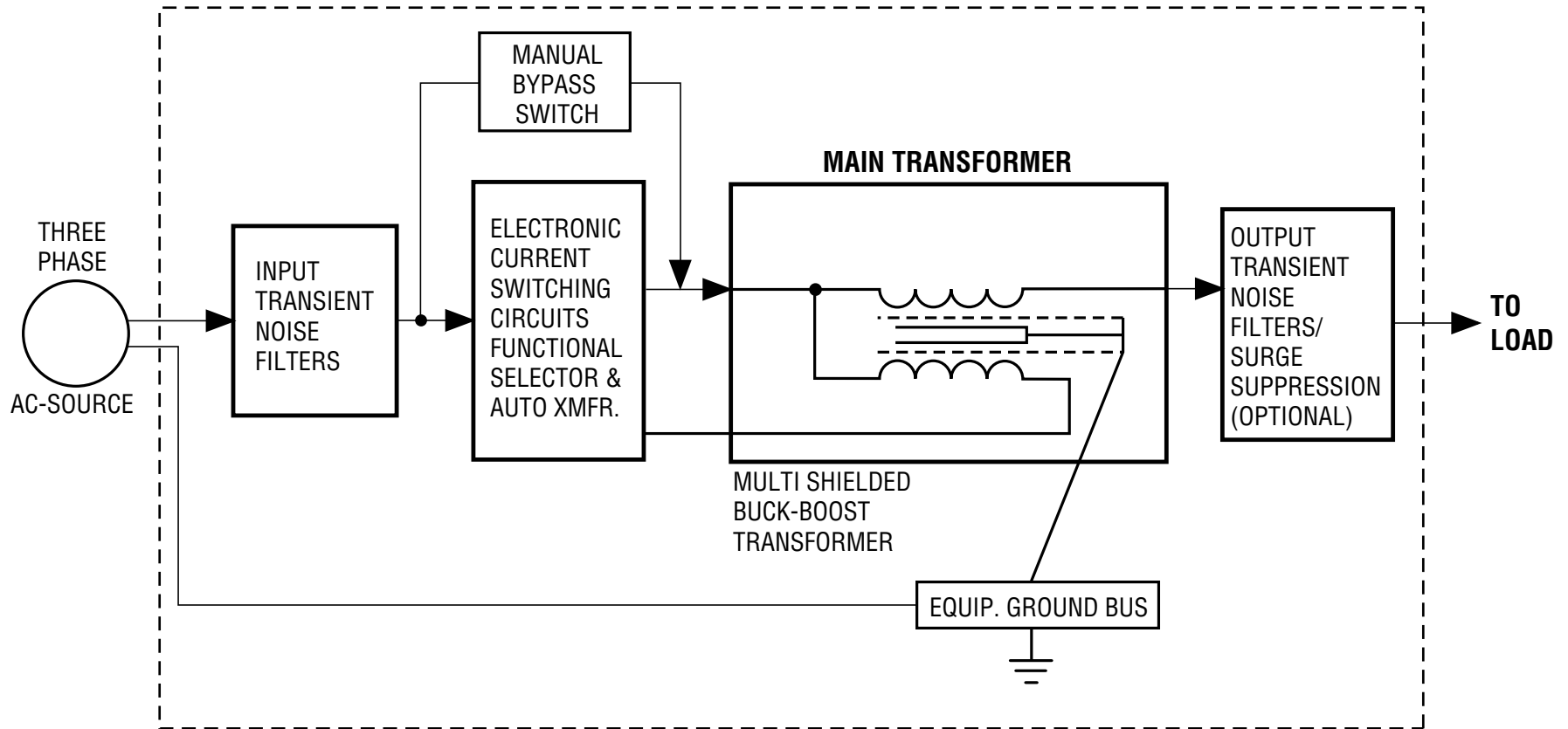
		INDUSTRIAL AUTOMATIC VOLTAGE REGULATOR	
DRAWN: H.N. 12/15/21	APPVD: H.N. 12/15/21	160-TD-B	Rev A
<small>SUBJECT TO CHANGE WITHOUT NOTICE</small>			

FUNCTIONAL BLOCK DIAGRAM



POWER-REG	
Three Phase 15 - 300 kVA	 <small>FBD4030A-1097</small>

POWER-REG FUNCTIONAL BLOCK DIAGRAM



POWER-REG

**Three Phase
350 - 2000 kVA**



FBD4091A-798