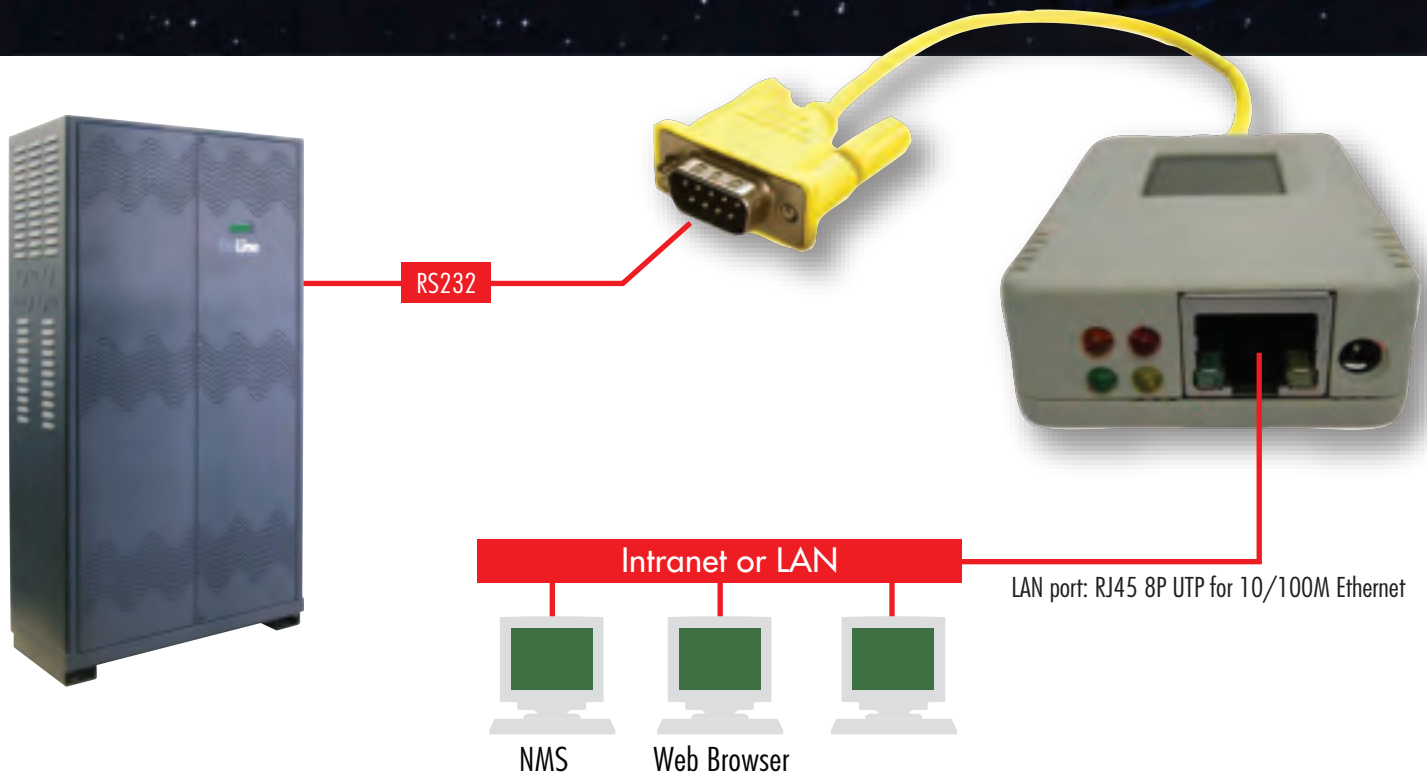


GMS

Global Monitoring System

for Three Phase Central Lighting Inverters

The most advanced Local/Remote Monitor,
Data/Event Logging via SNMP, Wire or Wireless
(status monitoring, email, text messaging, and system report)



FEATURES:

- Provide SNMP MIB to monitor & log UPS status
- Auto-sense 10/100M Fast Ethernet
- Manage & configure via Telnet, Web Browser or NMS
- Support TCP/IP, UDP, SNMP, Telnet, Sntp, PPP, HTTP, SMTP Protocol
- Sending both of SNMP TRAP and E-mail for events notification.
- Auto email daily Battery Backup history report (configurable)
- Basic NetAgent: LAN



OnLine Powers Global Monitoring System keeps you informed 24 hours a day from a distance (email, text message, report) to prevent Costly Problems of your power system.

Sample Screens

Screen Menu

Information

System Status **A**

Basic Information

Current Status **B**

Meter/Chart **C**

Configuration

UPS Configuration **D**

Network

SNMP

Email **E**

SMS

WEB/Telnet

System Time

Language

Log Information

Event Log **F**

SMS Log

Data Log **G**

Save Data Log

Help

About

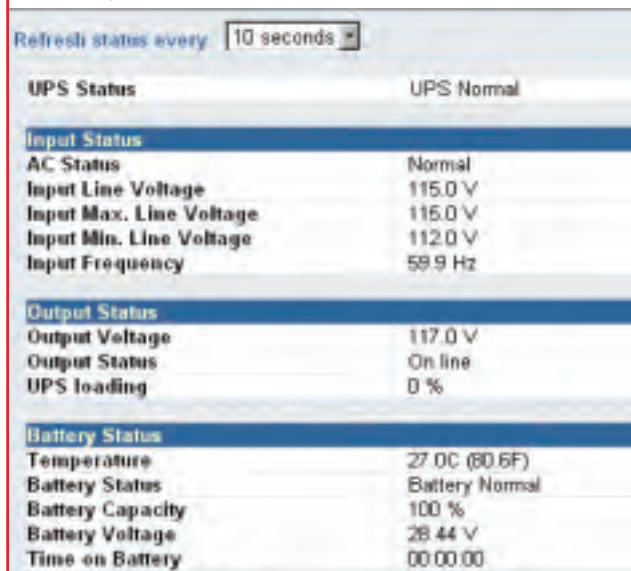
System Status

System Information
Network Status



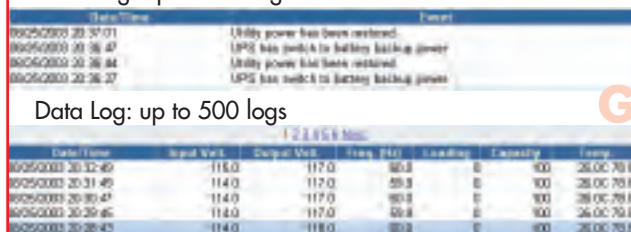
Current Status (UPS Status)

Input Status
Output Status
Battery Status



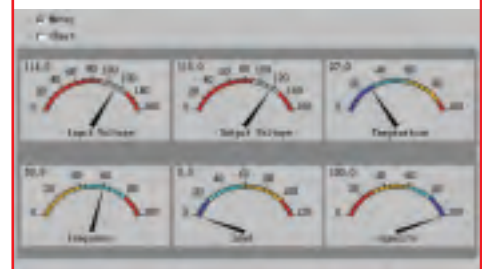
Log Info:

Event Log: up to 100 logs



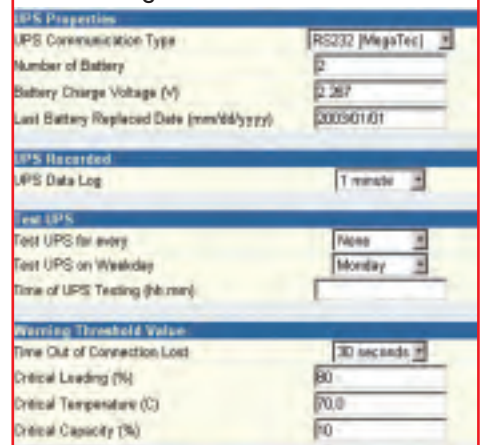
Meter/Chart

Input Volt, Output Volt, Temperature, Frequency, Load, Capacity



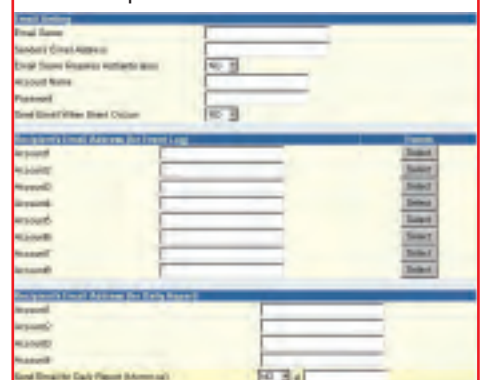
UPS Configuration

UPS Properties
UPS Recorded
Test UPS
Warning Threshold Value



Notification:

Email: up to 8 email addresses



GPRS: General Packet Radio Service
LAN: Local Area Network
MIB: Management Information Base
NMS: Network Management System
SMS: Short Message Service
SNMP: Simple Network Management Protocol
WiFi: IEEE 802.11 standards

Specifications are subject to change without prior notifications.

5701 Smithway St., Commerce, CA 90040
Tel: (323) 721-5017, Fax: (323) 721-3929

